

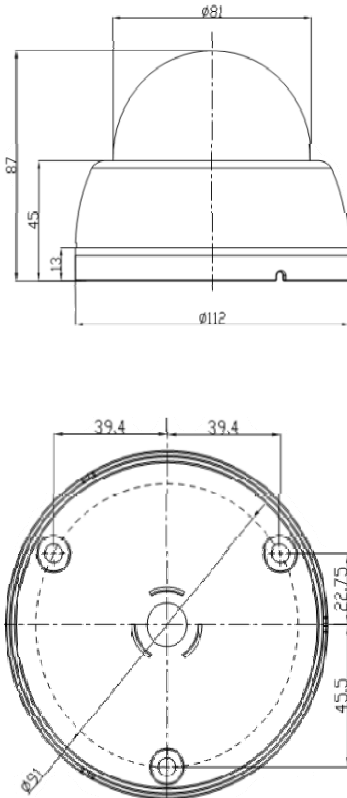


- 1/3" Sony Exview II CCD (700TV lines).
- Digital Signal Processing allows better Picture quality
- High sensitivity(Sony CCD),High Resolutions
- SMART IR, D-WDR, 2DNR, 24LED
- 3.6mm / 2.9, 4, 6, 8mm (Selective)
- Cable OSD Control (Option)

SPECIFICATIONS

* OSD Menu is subject to change without prior notice

DIMENSIONS (unit: mm)



MODEL NAME		SDP7-FIR8024	
		NTSC	PAL
Image Device		1/3" SONY EXVIEW II CCD(NEW CCD)	
Total Pixels		1020(H) X 508(V) 520K Pixels	1020(H) X 596(V) 610K Pixels
Effective Pixels		976(H) X 494(V) 480K Pixels	976(H) X 582(V) 570K Pixels
Scanning System		2:1 Interlace	Non- Interlace
Synchronization		Internal Synchronization	
Horizontal Resolution		More Than 700 TV Lines	
Video Output		1.0Vp-p 75ohm LOAD	
S/N Ration		More Than 52dB (AGC OFF / F1.2)	
O S D M E N U	Lens	Auto / Manual	
	Shutter/AGC	Auto / Manual	
	White Balance	ATW, Push, User1, User2, Anti CR, Manual, Push Lock	
	Backlight	HLC / BLC / Off	
	Pict Adjust	Mirro, Brightness, Contrast, Sharpness, Hue, Gain	
	ATR	ON / OFF	
	Motion DET	ON / OFF	
	Privacy	ON / OFF	
	Day / Night	Auto, Cxolor, B/W	
	NR	NR Mode,Y Level,C Level	
Lens		3.6mm / 2.9, 4, 6, 8mm (Selective)	
Power Source		DC12V	
LED		24 LEDs	
Storage Temp.		14°F ~ 122°F (-10°C~ + 50°C)	
Operating Temp.		4°F ~ 140°F (-20°C~ + 60°C)	
Humidity		Less than 80%	
Cable		Standard 1.0m BNC/DC Jack	
Dimensions		112 x 87 x 81Ø	
Net Weight		Approx. g	